

TF-CBT Learning Community Kick-Off

Center for Evidence to Practice

Thursday, January 16, 2025

10:00AM-11:00PM CST

LSU Health
NEW ORLEANS
School of Public Health

The logo for the Louisiana Department of Health, featuring a stylized cross made of four colored squares (blue, teal, yellow, and blue).

LOUISIANA
DEPARTMENT OF HEALTH

TF-CBT Learning Community Support



Kelly Wilson, LCSW

TF-CBT Certified Trainer & TF-CBT Clinician



She has been a part of all TF-CBT training cohorts facilitated through the Center since Fall 2019!

E2P TF-CBT Reach by the Numbers

We have facilitated Nine (9) TF-CBT Cohorts in 5 YEARS!

How many were trained in Learning Session 1 and 2?

184 providers!

How many are completed 9/12 consultation calls?

120 Providers!

Why did providers choose TF-CBT?

“To utilized evidence-based models when treating trauma.”

“Enjoyed the training and process in helping children and the caregivers.”

“I want my therapists trained and, ultimately certified so I'm leading by example.”

“I work with youth who have experienced trauma and feel that TF-CBT is a good fit for some of my clients.”

Current Snapshot: TF-CBT in Louisiana

Just from 11 TF-CBT Trained Providers from an average of 2+ years of their caseload:

Current TF-CBT cases in their caseload:

24 Cases

Number of TF-CBT cases that have completed the full TF-CBT model:

38 Cases

What has been the impact?

“They’ve gained a different perspective equipped with [coping] skills to assist in maintaining daily functioning.”

“Improved their condition, able to move on... and very helpful, informative, and educational.”

“Most likely would state how it has enhanced their ability to communicate their trauma without shame and how it strengthens emotional literacy.”

Thoughts to Ponder:

How can the Center help you bring about more change with your clients, fellow TF-CBT Providers, and the community at large?

TF-CBT Learning Community Goals:

Provide ongoing clinical support to providers who are delivering TF-CBT within the Medicaid provider network to promote:

1. **sustainability** of service,
2. **clinical TF-CBT skill development** and quality service delivery,
3. professional development and **retention** of TF-CBT therapists

Ongoing ***FREE*** TF-CBT Support:

1. Center Provides each TF-CBT trained & Certified Provider the following:
 - The opportunity to **Audit TF-CBT Learning Session 1 and Learning Session 2 Training**
 - Cohort 9: Learning Session 2 Training: February 26-27, 2024 from 9:00AM-4:30PM
 - Cohort 10: Learning Session 1: October 28-30, 2025; Learning Session 2: February 10-11, 2026
2. ***FREE* TF-CBT EXTENSION Consultation Call Group** to catch up on missing consultation calls
 - 3rd THURSDAY of Every Month at 10:00AM CST: Beginning Thursday, February 20th, 2025
 - Email the Center if interested in joining: EvidenceToPractice@lsuhsc.edu
3. ***FREE* TF-CBT CERTIFIED Consultation Call Group**
 - 3rd TUESDAY of Every Month at 9:00AM CST: Beginning Tuesday, February 18th, 2025
 - Email the Center if interested in joining: EvidenceToPractice@lsuhsc.edu
1. **TF-CBT Accountability Partners (Peer Support)** – The Center can help pair you with one!
 - Email EvidencetoPractice@lsuhsc.edu if interested in creating one.

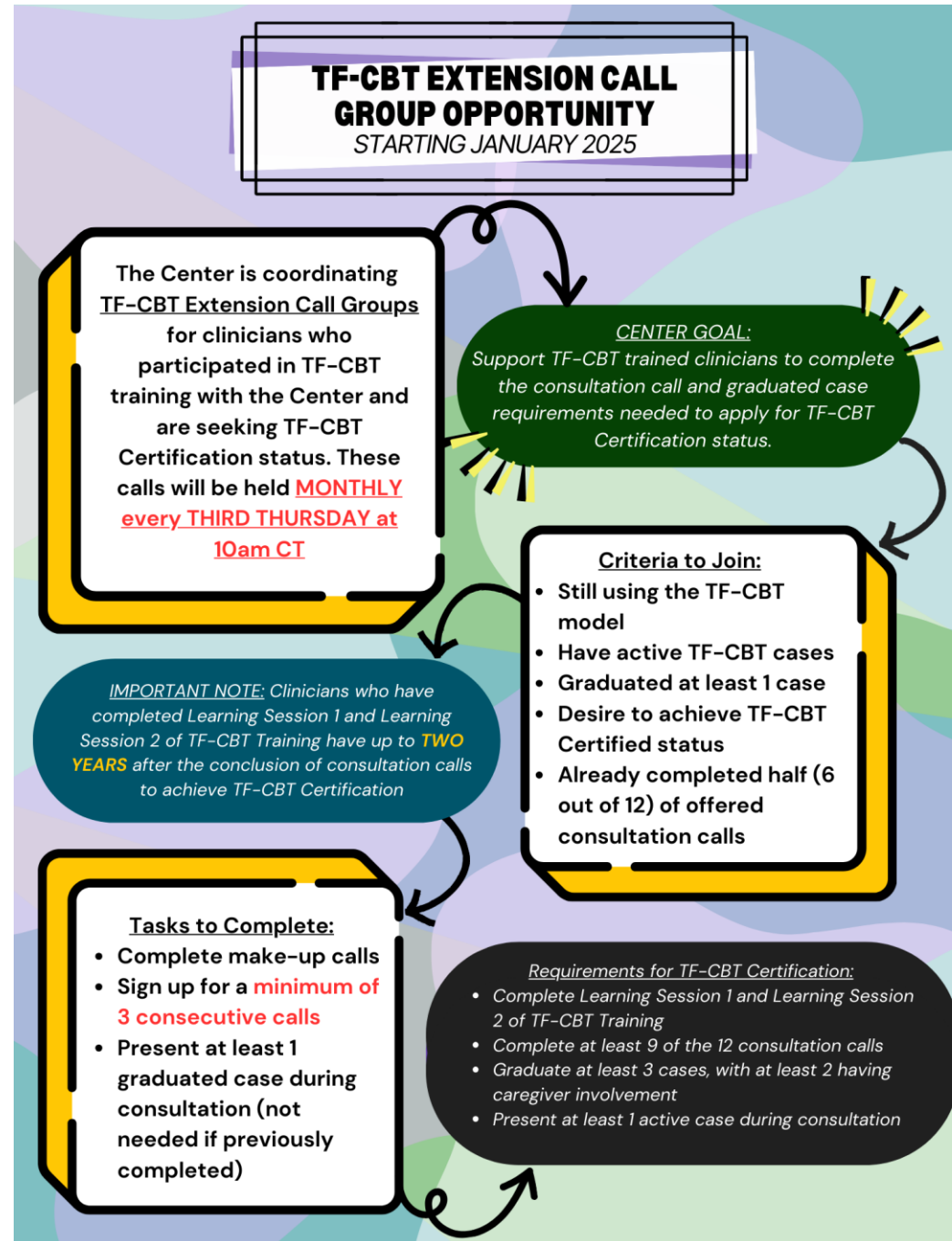


TF-CBT Extension Call Guidelines:

3rd THURSDAY of
Every Month:

Beginning Thursday,
February 20th at
10:00AM

Email the Center if interested in joining:
EvidenceToPractice@lsuhsc.edu



Zoom Link To
Join This Call:
You can access
it by [clicking](#)
[here.](#)

TF-CBT Certification Call Guidelines:

***FREE* TF-CBT CERTIFIED Consultation Call Group**

➤ **3rd TUESDAY of Every Month at 9:00AM CST:** Beginning Tuesday, February 18th, 2025

➤ Email the Center if interested in joining: EvidenceToPractice@lsuhsc.edu

➤ **CRITERIA to Join: Obtained TF-CBT Certification or eligible to apply for certification**

Zoom Link To Join This Call:

You can access it by [clicking here.](#)



Advanced Training Opportunity:

- Engaging Youth & Families: Why do they stop showing up?
 - Tuesday, January 28, 2025 from 9:00am-1:00pm
 - Register by clicking here: <https://laevidencetopractice.com/eyf-2024/>
- Narrative for Complex Trauma
 - Tuesday, April 15, 2025 from 9:00am-1:00pm
 - Register by clicking here: https://lsuhsc.zoom.us/meeting/register/3Q29W_3kT9y0lINhWcdjzw
- Advanced Cognitive Processing
 - Tuesday, May 20, 2025 from 9:00am-1:00pm
 - Register by clicking here: <https://lsuhsc.zoom.us/meeting/register/d5WINggQSVyro3nd2YRRNg>

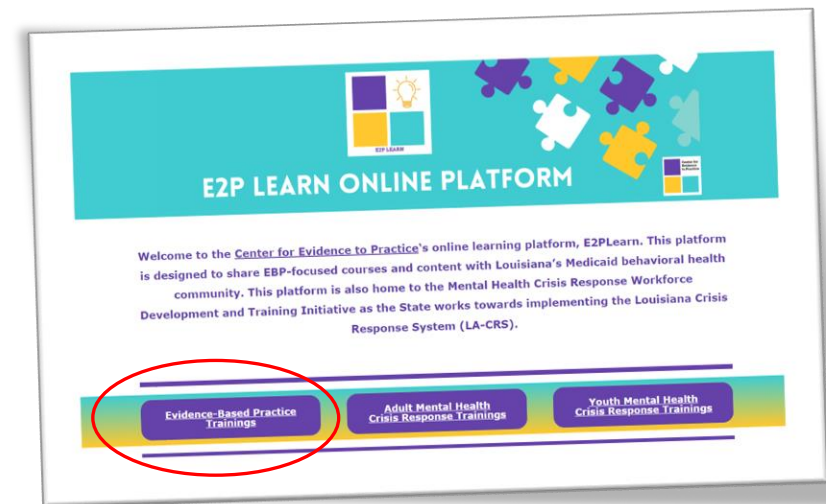
TF-CBT Senior Leadership Training Series:



- TF-CBT Leadership Meetings 2024-2025 Webpage:
 - You can access the recording and slides here:
<https://laevidencetopractice.com/tfcbt-leadership-meetings/>
- If you have current TF-CBT Trainees at your agency or you want to learn how to strengthen TF-CBT Implementation at your agency, join our future calls!
 - [Leadership Meeting #2](#): Tuesday, February 4, 2025 @ 12pm-1pm CST
 - [Leadership Meeting #3](#): Wednesday, June 4, 2025 @ 12pm-1pm CST
 - [Leadership Meeting #4](#): Tuesday, September 9, 2025 @ 12pm-1pm CST

E2P Learn Online Platform Resource

- The Center's [E2P Learn Online Platform](#) has over 30 online asynchronous learning opportunities for FREE accessible to anyone. Continuing Education (CE) certificates are provided upon completion. **Courses approved through the LABSWE & NBCC.**
- Topics with special populations include:
 - Human Trafficking Intervention
 - Motivational Interviewing
 - Working with the LGBTQ+ Population



Medicaid TF-CBT Tracking Code

Trauma-Focused Cognitive Behavior Therapy (TF-CBT) – [Tracking Code EB07](#)

[LDH Provider Manual](#) – EBP Policy for TF-CBT is outlined on pages: 428-437



➤ Qualification Standard

- TF-CBT Certification by the TF-CBT Therapist Certification Program

➤ Qualification Documentation

- Certificate issued by the TF-CBT National Therapist Certification Program OR inclusion in the TF-CBT Therapist Certification Program list

➤ Additional Information

- After completing training and consultation that meets TF-CBT Therapist Certification Program training standards, TF-CBT practitioners must submit an application to the TF-CBT Therapist Certification Program and complete a TF-CBT knowledge-based test to achieve certification. The TF-CBT Therapist Certification Program maintains a list of Certified TF-CBT Therapists at <https://tfcbt.org/therapists/>

TF-CBT Therapist must be re-certified every 5 years by completing an application and online recertification training modules.

Louisiana TF-CBT Network

Does anyone want to start one?

The Center can help support you! It can be a State or Regional Network.

Email: EvidenceToPractice@lsuhsc.edu if interested!



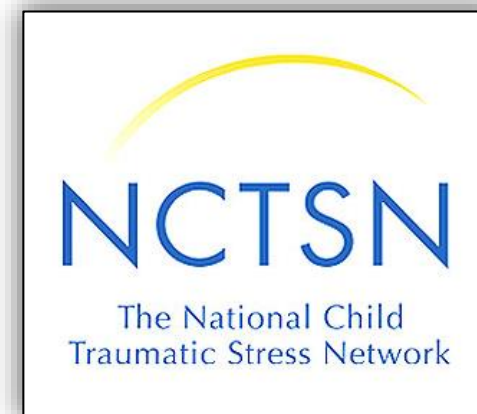
Where can I get more TF-CBT resources?

Oklahoma TF-CBT



<https://oklahomatfcbt.org/>

NCTSN



<https://www.nctsn.org/>

Action Step (5 minutes):

Which resource/opportunity interests you the most?

- *Take the next few moments and take an action step to get engaged!*
- *Is there anything missing that you would like to see? Let us know in the chat!*

Future TF-CBT Learning Community Engagement:



Spring 2026



We are planning additional advanced training opportunities, Agency/Provider highlights, etc – stay tuned for more details!

Any Questions?



E2P Contact Information:

Center for Evidence to Practice

Email: EvidenceToPractice@lsuhsc.edu

Phone: (504) 568-5731

Sign up for our [MailChimp Newsletter](#) today!