

# Child-Parent Psychotherapy (CPP) Agency Leadership Meeting #3

*Meeting 3 of 5 of an 18-month Implementation-Level Training,  
Cohort 4 through the Center for Evidence to Practice*

May 11, 2026

**Julie A. Larrieu, Ph.D., Amy Dickson, Psy.D.  
& Devi Miron Murphy, Ph.D.**

**Center for Evidence to Practice  
LSUHSC School of Public Health**



# Hello! Who is on the call?

---

- Name, Agency & Role**
- Where** are you located in Louisiana?
- How many clinicians** are you supporting in this CPP cohort?
- Are you looking forward to anything this summer?



# Meeting Overview

---

- CPP Trainers
- CPP Training Feedback
- Training & Consultation Schedule
- Senior Leadership Consultation Schedule
- CPP Requirements Reminder
- Agency Support Considerations
- CPP Trainee Updates
- Breakout Groups
- Feedback Survey & Future Meetings
- Questions & Answers

# CPP Trainers for Cohort 4

---



**Julie Larrieu, PhD**  
Tulane University  
*School of Medicine*



**Amy Dickson, Psy.D.**  
LSUHSC New Orleans  
*School of Medicine*



**Devi M. Murphy, PhD**  
Tulane University  
*School of Medicine*

# What is one take-away from Learning Session 2?

---

*“The story develops as the child develops.”*

**-CPP Trainee Evaluation Feedback**

*“How to hold everyone's perspective at the same time.”*

*-CPP Trainee Evaluation Feedback*

*“Learning how to decipher more analytically my clients and the needs and wants of their caretakers. Amy so eloquently delivers that. The team delivers in such a profound manner.”*

**-CPP Trainee Evaluation Feedback**

*“Better understanding of how to step into port of entry.”*

*-CPP Trainee Evaluation Feedback*

# CPP Learning Collaborative: Minimum Requirements

---

- Attend Three Learning Sessions
  - Session 1: Core Didactics (3-day, 18 hour minimum)
  - Session 2: Competency Building (2-day, 12 hour minimum)
  - Session 3: Competency Building (2-day, 12 hour minimum)



# CPP LC: Minimum Requirements

## Work with Families Using CPP

- Therapists: At least 4 parent-child dyads (at least one from “scratch”)
- Supervisors: At least 2 families
- At least 2 of the four cases must be treated for at least 16 sessions
- Child must be under age 6 at INTAKE and experienced at least one traumatic event. Loss, neglect, and exposure to impaired caregiver qualify in addition to traditional “big T” traumas
  - One case can involve in a pregnant caregiver at the start



# Minimum Requirements

---

Participate on CPP Consultation Calls (each clinician must attend a minimum of 23 calls)

- Case-based learning
- Twice a month for one hour each
- Held by CPP trainer
- Each participant presents at a minimum of two times
  - Each presentation is for one hour and includes discussion by the consultant group
  - Presenter fills out a case consultation form and sends ahead of time to the consultant group
  - Supervisor is on calls with their clinician when they present



# CPP 2025-2026 Training Cohort Dates

<del>Leadership Meeting #1</del>	<del>Monday, September 8, 2025 12pm-1pm CDT</del>
<del>MANDATORY Pre-Work Meeting</del>	<del>Monday, September 15, 2025 11am-1pm CDT</del>
<del>Learning Session 1</del>	<del>October 6-8, 2025 from 8:30am-5pm CDT</del>
<del>LS1 CE Eval Due</del>	<del>October 15, 2025</del>
<del>Leadership Meeting #2</del>	<del>Monday, January 12, 2026 12pm-1pm CST</del>
<del>Learning Session 2</del>	<del>April 9-10, 2026 from 8:30am-5:00pm CDT</del>
<del>LS2 CE Eval Due</del>	<del>April 17, 2026</del>
<del>Leadership Meeting #3</del>	<del>Monday, May 11, 2-26 from 12pm-1pm CDT</del>
Leadership Meeting #4	Monday, September 14, 2026 from 12pm-1pm CDT
Learning Session 3	October 7-8, 2026 from 8:30am-5:00pm CDT
LS3 CE Eval Due	October 15, 2026
Leadership Meeting #5	Monday, January 11, 2027 12pm-1pm CST
Consultation Call Commitment (Finalized during CPP LS1 Trainign)	Attend bi-weekly 1-hour consultation calls for 18 months

CEs will be provided for **social workers** and **counselors** who are accepted into this current CPP training cohort.



# Cohort 4: CPP TRAINEE Consultation Schedule

- If you would like to view when your clinician(s) are participating in CPP consultation, please access it by [clicking here!](#)
- The call schedule includes dates from October 2025-March 2027.
  - Clinicians need to attend **25/36 calls** to become CPP Rostered.

**CPP CONSULTATION CALL SIGN UP - Cohort #4**

This sign-up is for the CPP consultation calls for CPP Trainees in Cohort #4 who participated in Learning Session 1 on October 8-8, 2025; Learning Session 2 on April 9-10, 2026; and Learning Session 3 on October 7-8, 2026. Consultation calls will continue for the next 18 months (October 2025-March 2027).

**DIRECTIONS:**

1. You must sign up for ONE (1) consultation group.
2. Please select the SAME consultation call group color for the consultation period. You cannot switch between groups unless you confirm doing so with the trainer directly.
3. DO NOT ADD AN EXTRA LINE TO FIT IN YOUR NAME.
4. If you cannot make a year-long call group schedule work given the dates/times, please email a fellow trainee to see if they can switch call groups with you.
5. You **MUST attend 25/36 consultation calls** to be eligible to become CPP rostered, please the CPP website reference for more details: <https://childparentpsychotherapy.com/providers/training/>
6. Have questions regarding the consultation calls? Please **direct your questions to your perspective CPP trainer** of that call group.

Call Group Color:	CALL GROUP A	CALL GROUP B	
<b>CALL GROUP A: DR. AMY DICKSON CALL SCHEDULE</b>			
SELECT TIMES FROM THE SAME COLOR GROUP.			
<small>GROUP A: SECOND (2nd) and FOURTH (4th) MONDAY from 1:00PM-2:00PM CDT (unless highlighted in YELLOW)</small>			
SESSION	DAY	DATE	TIME
1	Monday	October 27, 2025	1:00PM-2:00PM CDT
2	Monday	November 10, 2025	1:00PM-2:00PM CST
3	Monday	November 24, 2025	1:00PM-2:00PM CST
4	Monday	December 8, 2025	1:00PM-2:00PM CST
5	Monday	December 22, 2025	1:00PM-2:00PM CST
6	Monday	January 12, 2026	1:00PM-2:00PM CST
7	Monday	January 26, 2026	1:00PM-2:00PM CST
8	Monday	February 9, 2026	1:00PM-2:00PM CST
9	Monday	February 23, 2026	1:00PM-2:00PM CST
10	Monday	March 9, 2026	1:00PM-2:00PM CDT
11	Monday	March 23, 2026	1:00PM-2:00PM CDT
12	Monday	April 13, 2026	1:00PM-2:00PM CDT
13	Monday	April 27, 2026	1:00PM-2:00PM CDT
14	Monday	May 11, 2026	1:00PM-2:00PM CDT
15	Monday	May 25, 2026	1:00PM-2:00PM CDT
16	Monday	June 8, 2026	1:00PM-2:00PM CDT
17	Monday	June 22, 2026	1:00PM-2:00PM CDT
18	Monday	July 13, 2026	1:00PM-2:00PM CDT
19	Monday	July 27, 2026	1:00PM-2:00PM CDT
20	Monday	August 10, 2026	1:00PM-2:00PM CDT
21	Monday	August 24, 2026	1:00PM-2:00PM CDT
22	Monday	September 14, 2026	1:00PM-2:00PM CDT
23	Monday	September 28, 2026	1:00PM-2:00PM CDT
24	Monday	October 12, 2026	1:00PM-2:00PM CDT
25	Monday	October 26, 2026	1:00PM-2:00PM CDT
26	Monday	November 9, 2026	1:00PM-2:00PM CST
27	Monday	November 23, 2026	1:00PM-2:00PM CST
28	Monday	December 14, 2026	1:00PM-2:00PM CST
29	Monday	December 28, 2026	1:00PM-2:00PM CST
30	Monday	January 11, 2027	1:00PM-2:00PM CST
31	Monday	January 25, 2027	1:00PM-2:00PM CST
32	Monday	2/8/2027 (may need to be rescheduled)	1:00PM-2:00PM CST
33	Monday	February 22, 2027	1:00PM-2:00PM CST
34	Monday	March 8, 2027	1:00PM-2:00PM CST
35	Monday	March 22, 2027	1:00PM-2:00PM CDT
36	Monday	April 12, 2027	1:00PM-2:00PM CDT

**CALL GROUP A: DR. AMY DICKSON**

SELECT TIMES FROM THE SAME COLOR GROUP.

Date and Time: SECOND (2nd) and FOURTH (4th) Monday from 1:00PM-2:00PM CDT (unless highlighted in YELLOW) Time Zone Converter

Facilitator: Dr. Amy Dickson

Email Form to: [adickson@cppt.org](mailto:adickson@cppt.org)

Case Presentation For: [CPP Case Presentation Form \(Updated\)](#)

[Topic: CPP Supervision](#)

[Join Zoom Meeting](#)

<https://us02nc.zoom.us/j/97862937426>

Meeting ID: 978 6293 7426

One tap mobile: +13014100927 67862937426 US (Washington DC)

# CPP SENIOR LEADER Consultation Schedule

**\*NEW\* Opportunity with this current CPP Cohort!**

## ➤ Monthly CPP Senior Leader Consultation Calls!

➤ Generally, the **FIRST Monday of each month from 12:00PM-1:00PM.**

➤ *Come get your questions answered!*

➤ You can access the full schedule by [CLICKING HERE!](#)

➤ Facilitated by CPP Trainer, Dr. Julie Larrieu

### CPP SENIOR LEADERSHIP CONSULTATION CALL SIGN UP - Cohort #4

This sign-up is for the CPP Senior Leadership Consultation calls for leadership supporting CPP clinicians in Cohort #4 who are participating in Learning Session 1 on October 6-8, 2025; Learning Session 2 on April 9-10, 2026; and Learning Session 3 on October 7-8, 2026. These Senior Leadership Consultation calls will continue once/month for the next 18 months (October 2025-March 2027).

#### DIRECTIONS:

1. The scheduled call schedule is listed below. This is a voluntary opportunity, although it is highly recommended for those leaders who are support clinicians through the CPP training period (October 2025-March 2027).
2. If you have questions about the CPP modality, please reach out to Dr. Julie Larrieu (jlarrie@tulane.edu) directly.
3. If you have questions around CPP training and schedule, please reach out to the Center (EvidenceToPractice@lsuhsc.edu) directly.

Call Group Colors:

SENIOR LEADERSHIP CONSULTATION SCHEDULE

### SENIOR LEADERSHIP CONSULTATION SCHEDULE: DR. JULIE LARRIEU

SENIOR LEADERSHIP CONSULTATION SCHEDULE: Usually the FIRST (1st) MONDAY of the month from 12:00PM-1:00PM CT (unless highlighted in YELLOW)

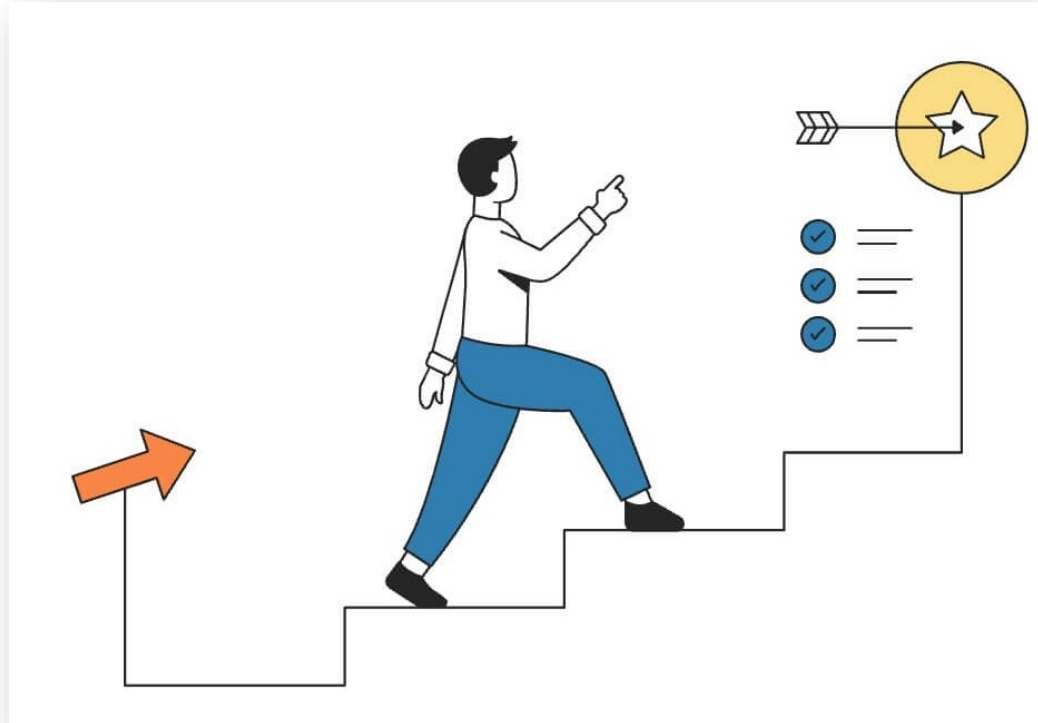
SESSION	DAY	DATE	TIME
1	Monday	October 20, 2025	12:00PM-1:00PM CT
2	Monday	November 3, 2025	12:00PM-1:00PM CT
3	Monday	December 1, 2025	12:00PM-1:00PM CT
4	Monday	January 5, 2026	12:00PM-1:00PM CT
5	Monday	February 2, 2026	12:00PM-1:00PM CT
6	Monday	March 2, 2026	12:00PM-1:00PM CT
7	Monday	April 13, 2026	12:00PM-1:00PM CT
8	Monday	May 4, 2026	12:00PM-1:00PM CT
9	Monday	June 1, 2026	12:00PM-1:00PM CT
10	Monday	July 13, 2026	12:00PM-1:00PM CT
11	Monday	August 3, 2026	12:00PM-1:00PM CT
12	Monday	September 14, 2026	12:00PM-1:00PM CT
13	Monday	October 19, 2026	12:00PM-1:00PM CT
14	Monday	November 2, 2026	12:00PM-1:00PM CT
15	Monday	December 7, 2026	12:00PM-1:00PM CT
16	Monday	January 4, 2027	12:00PM-1:00PM CT
17	Monday	February 1, 2027	12:00PM-1:00PM CT
18	Monday	March 1, 2027	12:00PM-1:00PM CT

### SENIOR LEADERSHIP CONSULTATION SCHEDULE: DR. JULIE LARRIEU

Date and Time	SENIOR LEADERSHIP CONSULTATION SCHEDULE: Usually the FIRST (1st) MONDAY of the month from 12:00PM-1:00PM CT (unless highlighted in YELLOW)
Facilitator	Dr. Julie Larrieu
Email Form to	<a href="mailto:jlarrie@tulane.edu">jlarrie@tulane.edu</a>
Case Presentation Form	<a href="#">CPP Case Presentation Form (Updated)</a>
Zoom Link	<a href="https://tulanehipaa.zoom.us/j/8484409297">https://tulanehipaa.zoom.us/j/8484409297</a> Meeting ID: 848 440 9297

# Training Status Updates!

---



- *We will share trainee updates per agency **towards completion with CPP requirements***

# Agency Considerations

---



- Are clinicians given the time & resources to conduct comprehensive assessments?
- Can toys be provided that allow for processing trauma and safety?
- Can childcare be provided if caregivers need to be seen alone?
- Is transportation for weekly sessions available?
- Can long-term therapy be offered?
- Does the agency have the capacity to provide reflective supervision to clinicians?

# Additional Agency Considerations

---

- Will clinicians be given time to discuss cases amongst each other?
- What partnerships/referral pathways exist right now with your agency to allow for young child cases to be referred to your agency?
- Does you need to adjust your clinician(s) caseload to allow for this modality?
- Have you considered adjusting advertisements on your website or providing printed materials at your agency on this **new service** your agency will offer?

# Facilitators of Training Completion

---

- Peer support
- Supervisor and administration support
- Well-established referral pipeline
- Commitment to consultation and learning the model
- Relationship with consultant

# CPP Agency Support Considerations

---

- Within Agency Peer Supervision
- Caseload Adjustment
- Referral Pathways
- Website/Advertisement/Communications of services
- Auditing Opportunity
- Other Thoughts/Suggestions?

# Barriers of Training Completion

---

- Case identification and selection
- Therapist reluctance to proceed
- Clients don't attend consistently
- Therapists don't attend consultation calls consistently

# Common **Challenges for Clinicians** with CPP Implementation

---

## **Clinicians:**

- Cherry Picking: Waiting for the perfect case
- Only taking 1-2 cases
- Not preparing for sessions
- Attending by not participating in consultation calls
- Not seeking consultation when having difficulty with a case
- Not tracking case progress

## **What it Looks Like:**

- “I don’t have any cases appropriate for CPP.”
- “I explained the model, but the child and/or family was not interested.”
- “I didn’t have time to prepare for the session because.....”
- “I tried to do CPP, but the case has too many challenges”
- Catching up on notes, driving, or being distracted while in consultation meeting.”
- “I’m not sure where I am in the model”

# Common **Challenges for Leaders** with CPP Implementation

---

## **Senior Leaders:**

- Not leading regular team meetings
- Losing focus and not staying up-to-date on team participation
- Not using metrics to identify barriers to implementation
- Failing to recognize and celebrate successes

## **What it Looks Like:**

- “We couldn’t find a time when everyone could meet.”
- “This pressing matter came up, so.....”
- Not reporting metrics back to the team

# Breakout Groups!

---

- Please round robin your **name, agency, and location** in Louisiana
- **1<sup>st</sup> time** with CPP trainees at agency OR Have you had **previous CPP trainees?**
- What is **one takeaway/shift/change** you will consider for your agency?



# How are your clinician(s) doing?

---

- Progress towards implementation:
  - *Share how your clinician(s) are progressing with cases and the model?*
- Let's help each other:
  - *What **successes** are you having at your agency?*
  - *What **obstacles** are you having at your agency?*



## Share out & Discussion:

---



# Billing Questions

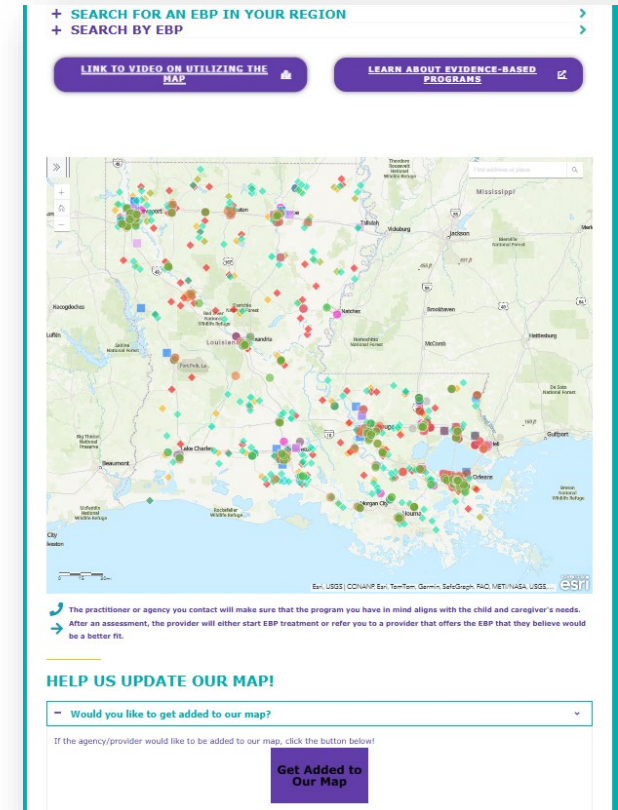
---

- Medicaid Billing
  - 90847- For the dyadic therapy
  - 90846- For meeting with the caregivers without the child
  - You can also bill an initial evaluation session
- Medicaid does not allow you to charge for more than one session a day
- Bill under the child's Medicaid number as may have families with more than one child

# Center EBP Map – Referral Pathway Resource!

## Add your AGENCY to the Center Map!

- This website is used all throughout Louisiana, some entities are LDH-OBH, MCOs, OJJ, DCFS and more!
- Either **ADD** or **EDIT** your agency information!



# CPP Leadership Meeting Series

---

- ~~1. CPP Meeting #1: Monday, September 8, 2026, from 12pm-1pm~~
- ~~2. CPP Meeting #2: Monday, January 12, 2026, from 12pm-1pm~~
- ~~3. CPP Meeting #3: Monday, May 11, 2026, from 12pm-1pm~~
4. CPP Meeting #4: Monday, September 14, 2026, from 12pm-1pm
  - You can register by clicking here:  
<https://lsuhsc.zoom.us/meeting/register/s-ok1ereQ1WVuBP4MjX-qw>
5. CPP Meeting #5: Monday, January 11, 2027, from 12pm-1pm
  - You can register by clicking here:  
<https://lsuhsc.zoom.us/meeting/register/ZwYUHbUVTsOGI1hknzTyRg>

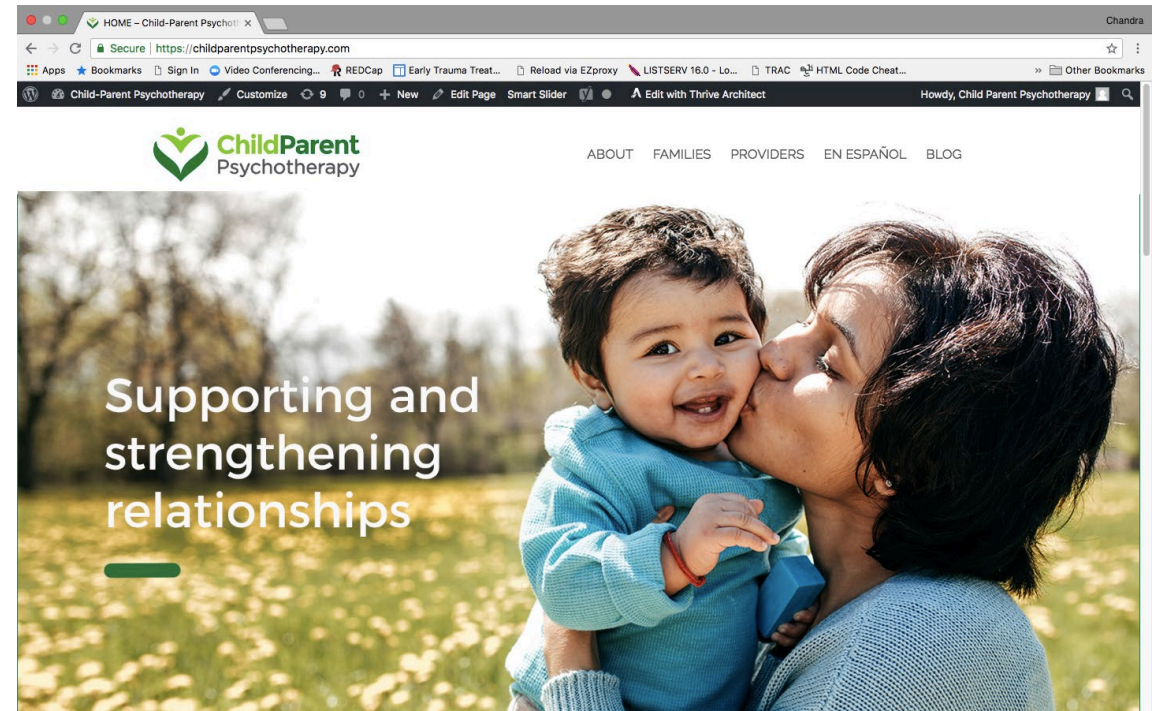
# CPP Online Resources: Child-Parent Psychotherapy Website:

<http://childparentpsychotherapy.com/>

Visit: <https://childparentpsychotherapy.com/providers/implementationtools/>

- CPP Manuals (information)
- Fidelity Instruments
- Brochure, Screeners & Research
- Book Lists
- CPP Toolkit
- Connect with us on Facebook and Pinterest (links at the bottom of each page of the website)

And much more ...



# We want to hear from you!

---

❑ Let us know what would be most helpful/beneficial during these calls!

❑ Feedback can be provided here:

[EBP Leadership Evaluation Form](#)



# GOAL: To become CPP Rostered!

---

## Child-Parent Psychotherapy (CPP) – [Tracking Code EB02](#)

### ➤ Qualification Standard

- Rostered as a trained CPP therapist by UCSF Child Trauma Research Program

### ➤ Qualification Documentation

- Certificate in Child-Parent Psychotherapy issued by the Child Trauma Research Program at UCSF
- OR inclusion on the CPP Provider Roster

### ➤ Additional Information

- CPP trainers issue the certificate upon completion of the training and consultation requirements for rostering. Therapists should contact their CPP trainers for a copy of the certificate if needed. Rostered therapists may be included on the CPP Provider Roster website <https://childtrauma.ucsf.edu/cpp-provider-roster>; however, this list is not comprehensive and a rostered therapist may elect to not be included on the list.

# Where can I learn more about CPP?

---

***Visit the National Website for CPP:***

- <https://childparentpsychotherapy.com/about/>



**ChildParent**  
Psychotherapy

# Questions & Contact Information



Center for Evidence to Practice  
Email: [EvidenceToPractice@lsuhsc.edu](mailto:EvidenceToPractice@lsuhsc.edu)  
Phone: (504) 568-5731

