

# Triple P Mandatory Orientation & Leadership Meeting #3

---

*Center for Evidence to Practice*

Wednesday, June 10, 2026

12:00PM-1:00PM CST

**LSU Health**  
NEW ORLEANS  
School of Public Health

The logo for the Louisiana Department of Health, featuring a stylized cross made of four colored squares (blue, yellow, teal, and purple) on the left and the text "LOUISIANA DEPARTMENT OF HEALTH" on the right.

LOUISIANA  
DEPARTMENT OF HEALTH

# Overview

---

- Welcome & Intros
- Triple P Status Update
- Breakout Groups
- EBP Implementation Principles
- Triple P Sustainability
- Triple P Consultation – one left!
- Triple P Accreditation & Tracking Code
- Center EBP Map & Provider Manual
- Triple P Investment & Resources
- EBP Leadership Survey
- Questions & Answers

# Welcome!

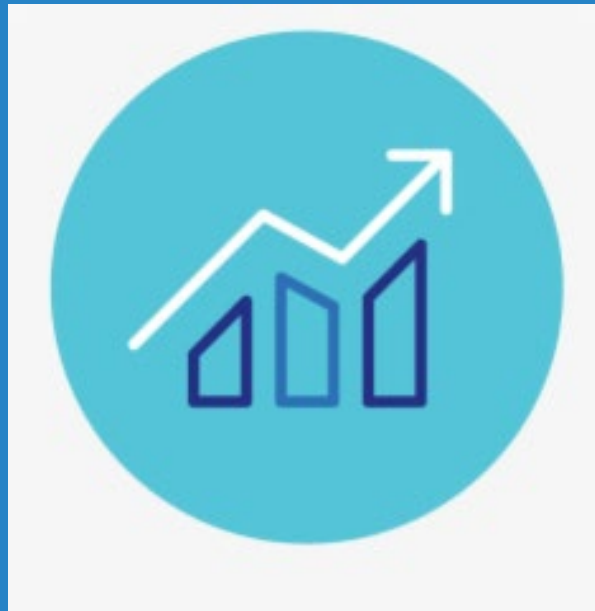
---

- *Name*
- *Agency & Role*
- *Location*
- *How many clinicians are you supporting?*

A decorative, black, cursive-style word "Welcome" with elaborate flourishes, including swirls and small floral motifs, set against a white background.

Welcome

# Progress Update:



# We want to hear from you!

- *How is Triple P going at your agency?*
- *Where do you stand with Triple P implementation?*
- *How many cases does your clinician have?*

# Welcome! Breakout Groups:

---

- *Please round robin (if needed) of your **name, agency, and location** in Louisiana*
- *What **successes** do you have with Triple P implementation?*
- *What **obstacles** do you have with Triple P implementation?*



**\*\*Document who will record & share following breakout groups!\*\***

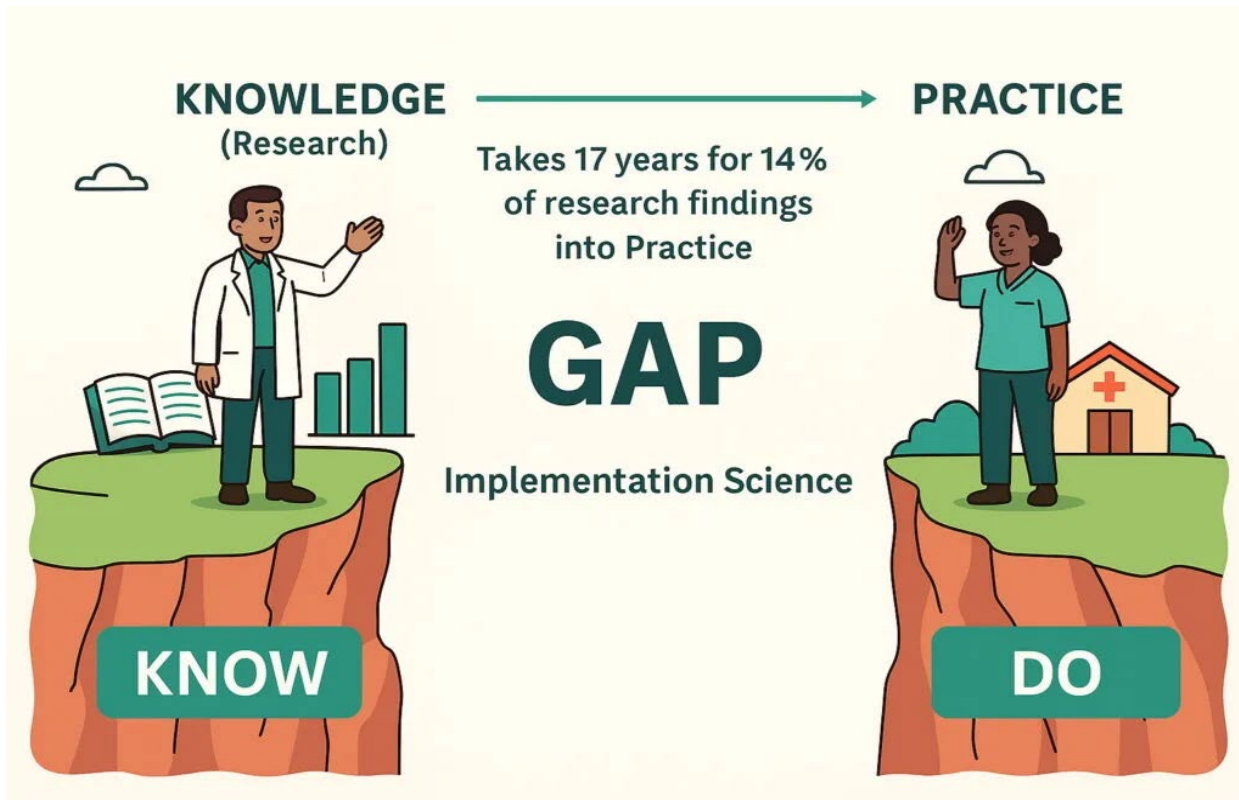
# Share out & Discussion:

---



- *Please have your pre-selected person speak on **main takeaways** and share only if there is something **new** to add to the discussion.*

# Common Barriers and Facilitators of EBP Adoption



Consistent finding: there is a **gap** between what research evidence establishes as a best practice and what providers are able to implement in the real world treatment context.

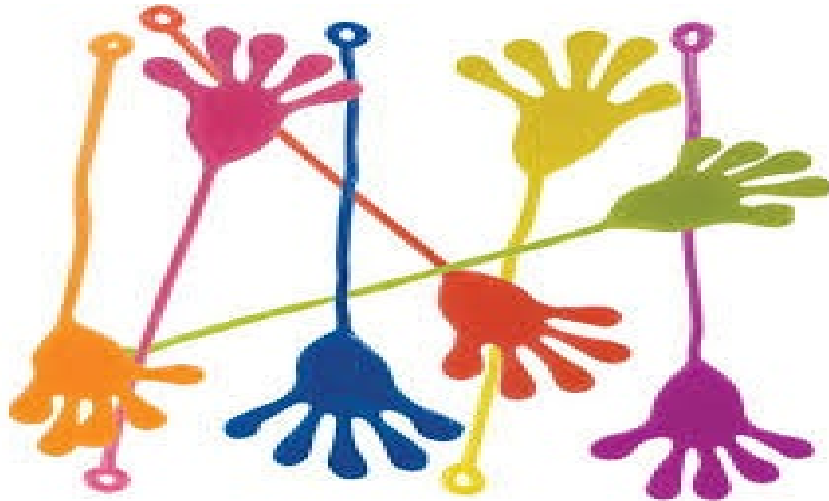
# Five Elements of Fidelity

1. Adherence
2. Exposure
3. Quality of delivery
4. Participant responsiveness
5. Program differentiation



# Adherence

- Aligning with the research **protocol**.
- Following **prescribed methods and timelines** to the letter.
- Sticking to **the recipe**.
- Any **deviations could compromise** results.



# Exposure/Dose

---



- Ensuring adequate program **content delivery**.
- Delivering the intervention as designed:
  - Frequency
  - Duration
- Delivering the **right “dose”** of the intervention.

# Quality of Delivery

- How well is the **clinician implementing** the model?
- Clinician **competence**.
- **Consistency** across different settings.
- Highlights the need for **standardised training and regular quality checks**.

## QUALITY CONTROL



# Participant Responsiveness



**Responsive**

- Encompasses not only the individuals receiving the intervention, but **also those responsible for delivering the model.**
- **Senior management commitment** to supporting the implementation and sustainability of the model directly impacts the responsiveness of the individuals affected.
- Higher levels of adherence are correlated with **clinician enthusiasm** about the model.

# Program Differentiation

- What makes the intervention **special**?
- Identifying these **unique features** helps you understand which elements contribute to its effectiveness.



shutterstock.com · 291520115

# The Right Seat on the Right Bus

- Identify organizational and practitioner **predictors of implementation fidelity:**
  - practitioner belief in the value of EBPs
  - practitioner belief in personal skill set
  - practitioner endorsement of supervisory requirements
  - Possible moderating organizational variables, organizational readiness and management support.

The first job of the Leaders is to get:

**'the right people on the bus...**

**...the wrong people off the bus,**

**... and the right people in the right seats'**



Jim Collins, Good To Great.

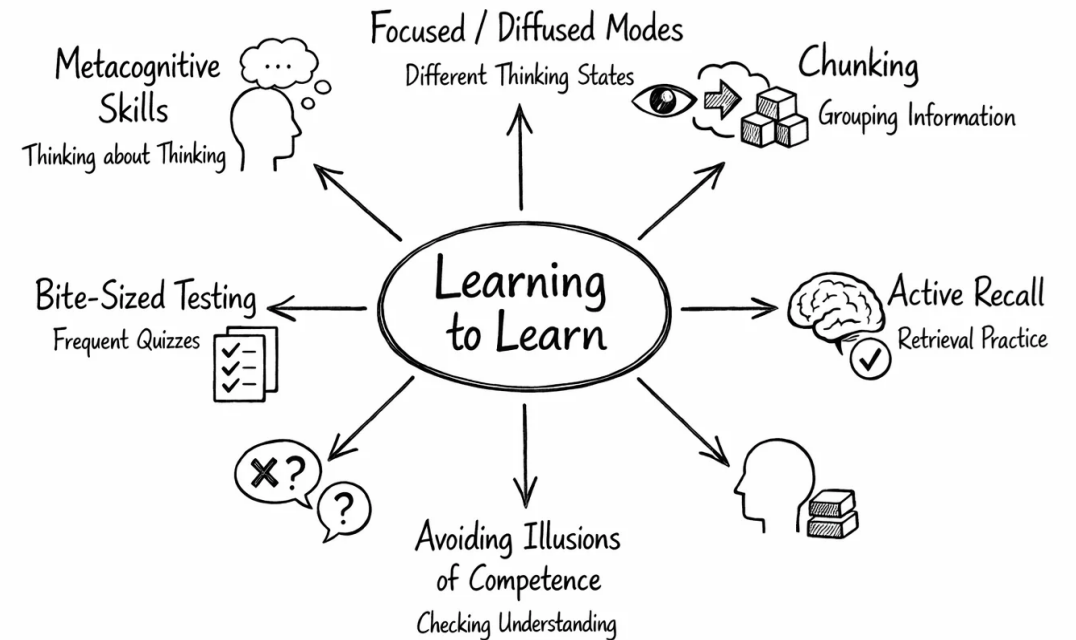
# Impacts of Effective Training



- More general **positive attitudes about the EBP by team** members
  - Greater likelihood of **adopting** the EBP
  - Greater likelihood of **finding use of the EBP appealing**
  - **Lower likelihood to view the EBP as a complete departure** from current practices (hence diminished chance of new-initiative fatigue)

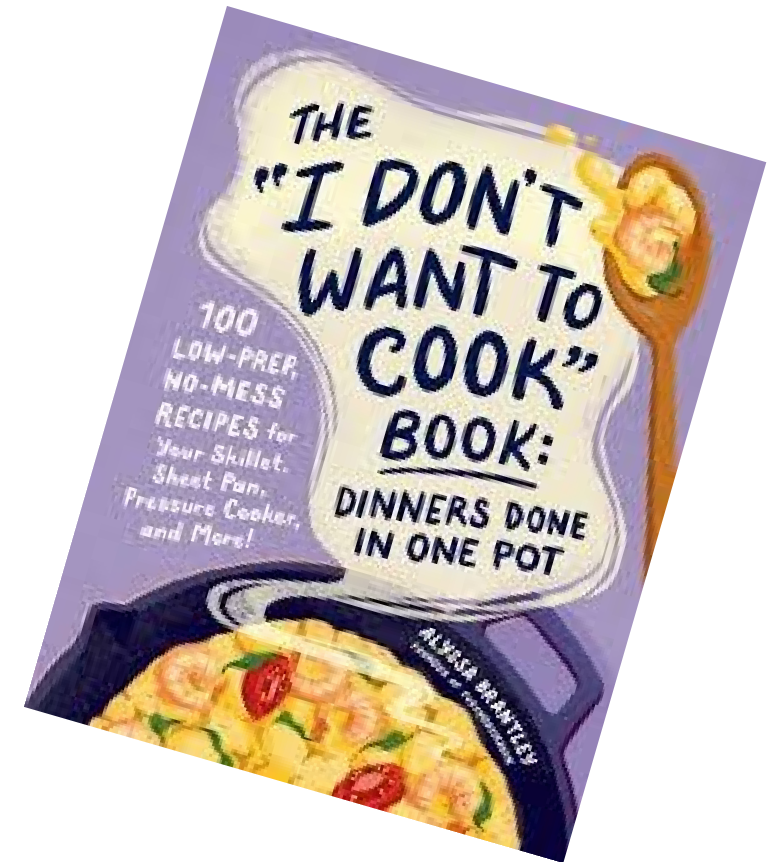
# The Power of a Learning-Centered Environment

- **Targeted training and support** focused on positively influencing clinicians' attitudes, values, and commitment to utilizing EBPs with fidelity.
- **Supervisory and peer support** during the early stage of adoption is crucial to implementation.
- **Investment in ongoing training** and consultation opportunities enhances maintenance of fidelity.



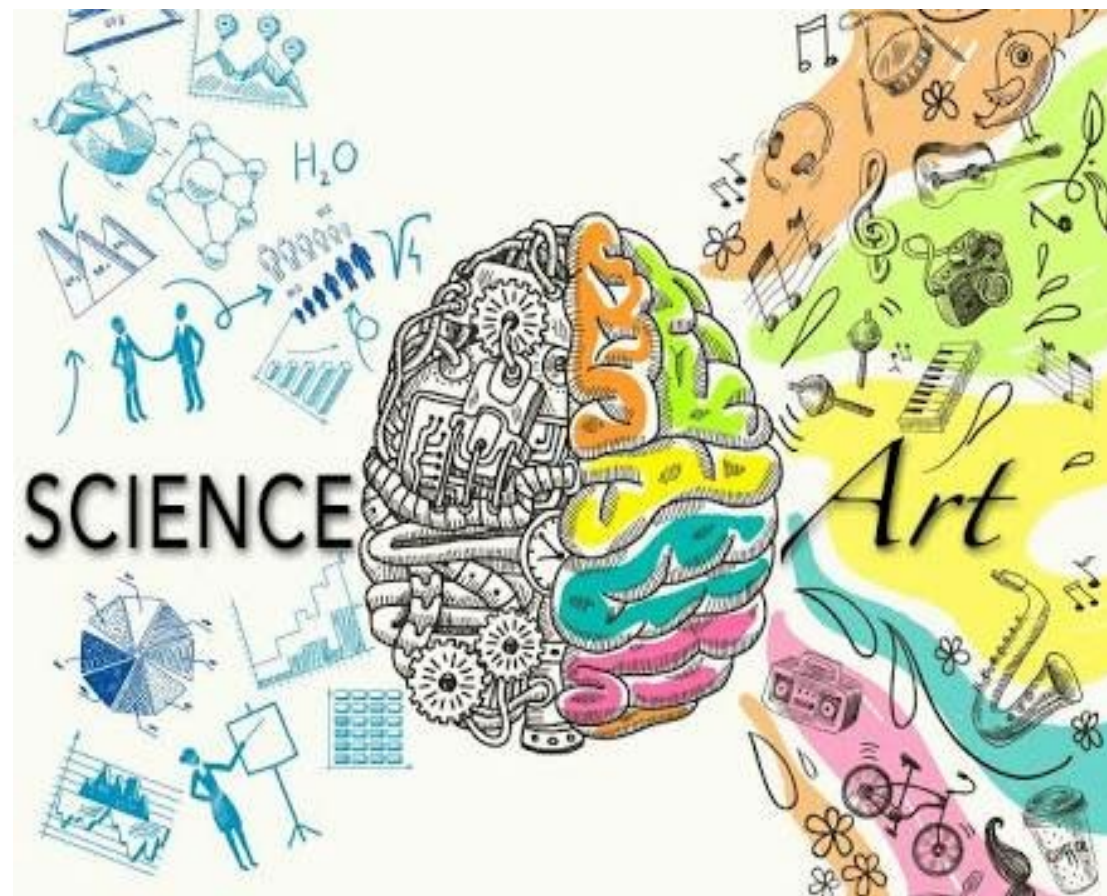
# EBPs are not Cook Books

To effectively treat posttraumatic stress disorder in children, evidence-based practices should be **implemented with flexibility and responsiveness to culture, developmental level, and the specific needs of the family.**



# An EBP is not an EBP without Fidelity

Particular attention can be paid to the **use of creative strategies to tailor interventions to the individual clients while maintaining fidelity** to the principles and components of the evidence-based treatment.



# Triple P Sustainability Materials

---

- Want to access enduring materials for Triple P?
- You can access the link by clicking here:  
<https://drive.google.com/drive/folders/1VUuykngu2lhz1f2PbjfYumVf0m8L-nmU?usp=sharing>



# Triple P Consultation Schedule

## 1. Consultation Support: Once a month on 1<sup>st</sup> Tuesday

Leadership & clinicians can view the schedule by [CLICKING HERE](#).

<b>TRIPLE P CONSULTATION CALL SCHEDULE- COHORT #3</b>			
<i>This is the group consultation calls for Triple P trainees Cohort #3 who will participate in Triple P Training on January 27-29, 2026. Consultation calls will continue for six months (March 2026-June 2026).</i>			
<b>DIRECTIONS:</b>			
1. Please review the consultation call schedule below.			
2. Please note that there are three (3) options for the first consultation call in preparation for Triple P Accreditation day.			
5. Have questions regarding the Triple P consultation calls? Please direct your questions to Dr. Amanda Keating: <a href="mailto:dr.keating@amandakeating.com">dr.keating@amandakeating.com</a>			
<b>TRIPLE P CONSULTATION CALL SCHEDULE</b>			
<i>GROUP A: Once a month on the 1st TUESDAY from 12:30PM-1:30PM CT</i>			
SESSION	DAY	DATE	TIME
1	Tuesday	February 10, 2026	12:30PM-1:30PM CT
2	Tuesday	March 3, 2026	12:30PM-1:30PM CT
3	Tuesday	April 7, 2026	12:30PM-1:30PM CT
4	Tuesday	May 5, 2026	12:30PM-1:30PM CT
5	Tuesday	June 2, 2026	12:30PM-1:30PM CT
6	Tuesday	June 30, 2026	12:30PM-1:30PM CT

# How do I achieve Triple P Accreditation?

---

- ~~Attend all virtual training dates~~
  - ~~The camera **MUST BE ON** during the whole training~~
  - ~~Engage as if you were in a training room~~
  - ~~Follow the Center Training Expectations & Guidelines~~
- ~~Complete Standard Triple P Accreditation Form~~
- ~~Complete Standard Triple P Quiz~~
  - ~~30 questions, take home after training, open book~~
- ~~Demonstrate via role play with a colleague 3 competencies for delivering Triple P~~
- **Share your Standard Triple P Accreditation Certification with your MCOs entities!**
- **Submit your information on our EBP Map Webpage!**

# GOAL: Obtain Triple P Accreditation

---

## Triple P (Level 4) Accreditation – Tracking Code EB06

*\*\*Enhanced Rate for Healthy Blue - \$10.00/session\*\**

### ➤ **Qualification Standard**

- Accreditation by Triple P America (TPA)

### ➤ **Qualification Documentation**

- Documentation issued by Triple P America of accreditation in Triple P- Standard Level 4.

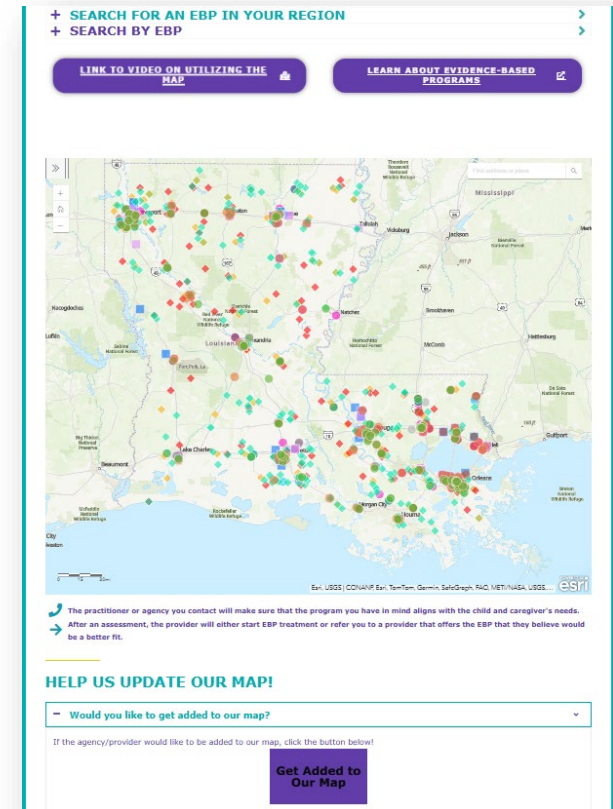
### ➤ **Additional Information**

- Triple P America does not maintain a public directory of accredited providers. Triple P America does issue documentation of accreditation to the individual provider.

# Center EBP Map – Referral Pathway Resource!

## Add your AGENCY to the Center Map!

- This website is used all throughout Louisiana, some entities are LDH-OBH, MCOs, OJJ, DCFS and more!
- Either **ADD** or **EDIT** your agency information!



# LDH Behavioral Health Services Provider Manual:

- Check out the [Triple P \(Level 4\) Service Definition \(Pgs. 425-432\)](#) by the Louisiana Department of Health (LDH) – Louisiana Medicaid Program:

LOUISIANA MEDICAID PROGRAM	ISSUED: 02/25/22
	REPLACED: 08/26/21
<b>CHAPTER 2: BEHAVIORAL HEALTH SERVICES</b>	
<b>APPENDIX E-8: EVIDENCED BASED PRACTICES (EBPs) POLICY –</b>	
<b>TRIPLE P- STANDARD LEVEL 4</b>	<b>PAGE(S) 8</b>

**TRIPLE P POSITIVE PARENTING PROGRAM – STANDARD LEVEL 4**

The Triple P Positive Parenting Program is a parenting and family support system designed to prevent and treat behavioral and emotional problems in children. It aims to prevent problems in the family, school and community before they arise and to create family environments that encourage children to realize their potential. The “Triple P System” includes a suite of interventions with different intensity levels and delivery methods, to meet the individual needs of youth and parents.

Triple P – Standard Level 4 is designed to be delivered to the parents of children with moderate to severe behavioral difficulties. It is available for parents of children from birth to 12 years old and covers Triple P’s 17 core positive parenting skills that can be adapted to a wide range of parenting situations.

Triple P – Standard Level 4 is a model used within the service “Outpatient Therapy by Licensed Practitioners.” Therefore, it follows the requirements set out in the “Outpatient Therapy by Licensed Practitioners” section of this manual.



**Evaluation of the Evidence Base for the ERP Model**

# Triple P Agency Investment

- Triple P has a 71% chance that benefits will exceed costs.
- You can learn more by [CLICKING HERE.](#)

## Significant Benefits of Positive Parenting Support Programs

March 2025 | Elisha Lee, UNC- Chapel Hill MSW Student; National Initiative for Trauma Education and Workforce Development (NITEWD) Intern; & National Prevention Science Coalition to Improve Lives (NPSC) Intern

 The National Initiative for Trauma Education and Workforce Development 

### What Does the Research Tell Us?

Evidence-based Parenting Programs have been shown to promote positive outcomes for children and youth by providing families with the support they need to nurture their social, emotional, and behavioral health.

### Adverse Childhood Experiences (ACEs)

Frequent or prolonged exposure to ACEs has the potential to change the development of a child's brain and physiology, especially if that child lacks protective and supportive adults in their life to buffer the stress (Shonkoff et al., 2012).

### COST BENEFIT ANALYSIS

Parenting Support Program	Benefits minus costs (net present value)	Benefit > Cost Ratio	Chance benefits will exceed costs
Positive Parenting Program - Level 4	\$4,358	na	97%
Triple P- Positive Parenting Program (System)	\$2,789	\$8.87	71%
Strengthening Families for Parents and Youth 10-14	\$3,344	\$5.94	60%
Incredible Years Parent Training	\$8,698	\$6.28	59%
Parent-Child Interaction Therapy (PCIT) for families in the child welfare system	\$32,936	\$17.46	95%
Brief Intervention in Emergency Department (SBIRT)	\$2418	\$5.56	60%
Multisystemic Therapy (MST) for Court-involved/ Post-Release Youth	\$19,768	\$3.01	99%

### Are ACEs Preventable or Reversible?

**YES!**

Through Parenting Support Programs.

### PPSP & Medicaid

Medicaid often bears the financial burden of treating chronic conditions, mental health issues, and other long-term health problems that can be prevented.

By intervening early and supporting parents in their ability to care for their children, positive parenting programs can have lasting effects on children's well-being. Healthier children, who are less likely to develop chronic health issues, result in **reduced lifetime healthcare costs.**

Medicaid expansion in many states provides for behavioral health services; however, currently, parenting programs are not often covered.

wsipp.wa.gov

# Triple P America Webinars

## ➤ Triple P America Webinars

that highlights:

- Parents of Children with Anxiety
- Families Involved with Child Welfare
- Child Abuse Prevention Through Advocacy
- Implementation Resources

Meeting Title	Date	Platform (Zoom/Teams/etc.)
Introducing Fear-Less for Parents of Children with Anxiety	Wednesday, May 24, 2023	Zoom
Using Triple P with Families Involved with Child Welfare	Thursday, November 30, 2023	Zoom
Triple P: Promoting the Positive, Reducing the Risk	Tuesday, April 30, 2024	Zoom
PASS it On! (All about PASS)	Thursday, June 27, 2024	Zoom
Triple P for Baby	Tuesday, August 27, 2024	Zoom
Triple P Webinar: The Positive Early Childhood Education (PECE) Program	Thursday, September 19, 2024	Zoom
Triple P October Webinar: Provider Spotlight	Thursday, October 24, 2024	Zoom
Tools for Success - New Implementation Resources	Monday, March 24, 2025	Zoom
Partnering in Child Abuse Prevention Through Advocacy	Thursday, April 24, 2025	Zoom

# Additional Triple P Materials

**CONTACT**

To order Triple P resources or for any other inquiries please use the form below.

\* REQUIRED FIELD

NAME\*

ORGANIZATION\*

E-MAIL\*

COUNTRY OF INTEREST\*

TYPE OF INQUIRY\*

MESSAGE

YES, I HAVE READ AND AGREED TO THE PRIVACY POLICY\*

SEND

- To order additional materials, please visit this website and complete the Contact Form: [Local contacts - Triple P](#)

# Where can I learn more about Triple P?

---

***Triple P America Website***

[Triple P Implementation | Official Corporate site](#)

or

***Triple P Evidence-Based Research (870+ articles)***

[Triple P Evidence-base](#)



# We want to hear from Leadership!

---

- Let us know what would be most helpful/beneficial during these calls!
- Feedback can be provided here:
  - <https://redcap.link/ebpleadership>



# Contact Information:

---

***Center for Evidence to Practice***

**Email: [EvidenceToPractice@lsuhsc.edu](mailto:EvidenceToPractice@lsuhsc.edu)**

**Phone: (504) 568-5731**

# Questions:

---

